

CITY SCHASLYVE

# EXHIBITION COMPLEX

SCHASLYVE, KYIV REGION,  
UKRAINE





DEVELOPER



City State, LLC

Ukraine, Kiev, 01013,  
Stroyindustrii Str., 6

tel.: +38 (044) 594 91 84

fax: +38 (044) 545 75 15

ayurkevych@gmail.com

www.citystate.com.ua

GENERAL PLANNER



Ukraine, Kiev, 01013,  
Stroyindustrii Str., 6

tel.: +38 (044) 594 91 90

fax: +38 (044) 545 75 20

v.shershun@prodiz.com.ua

angelina.davydenko@gmail.com

Technical and economics indexes	3
Location scheme	4
General location plan	5
Transportation scheme	6
Master plan scheme	7
Zoning scheme at the level -4,500	8
Zoning scheme at the level -2,800	9
Zoning scheme at the level 0,000	10
Zoning scheme at the level +4,500	11
Zoning scheme at the level +9,000	12
Zoning scheme at the level from +13,500 to +21,150	13
Zoning scheme at the level from +28,500 to + 45,000	14
Sections	15
Facades	16
General views	17

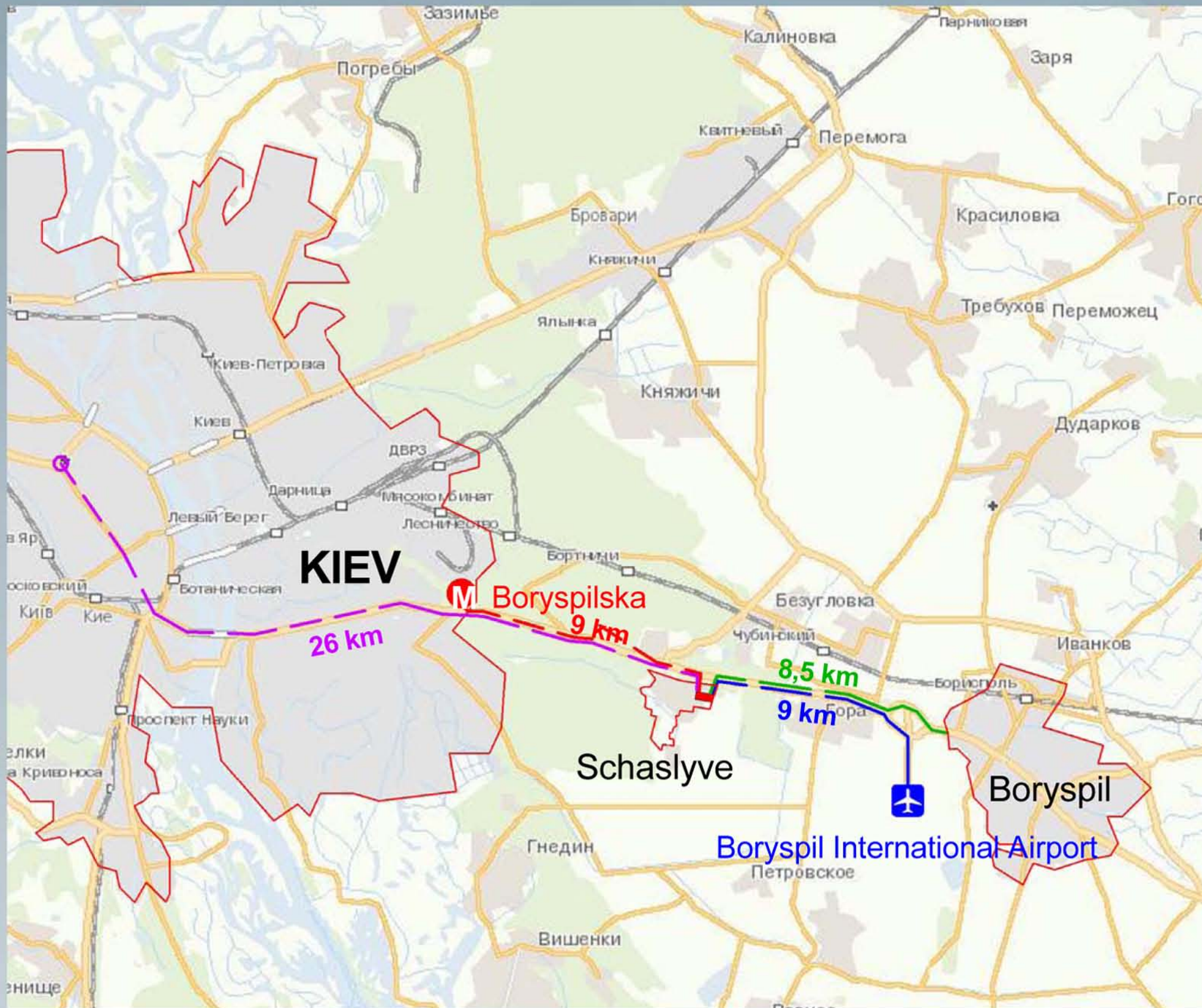
## Exhibition complex premises technical and economics indexes

number	Premise	Area, sq.m	Notes
1	Total exhibition complex area	215065	
	including:		
	Exhibition pavilions	84813	
	Multifunctional hall	14136	
	Congress centre hall	3420	
	Office and hotel buildings	26619	
	Commercial premises and public catering area	30766	
	General use gallery	22083	
	Utility rooms, warehouses	33228	
2	Two-level parking	149588	
	including:		
	Ground parking	77414	3090 places
	Semi-inground parking	72174	2880 places





## Land parcel technical and economics indexes

number	Premise	Area	Notes
1	Land parcel area	31,39 ha	
	including:	27,90 ha	
2	Construction footprint area	14,9 ha	
3	Uploading zone area	3,26 ha	
4	Public use area	1,84 ha	
5	Two-level parking area	14,96 ha	
6	Eccess ways area	3,65 ha	

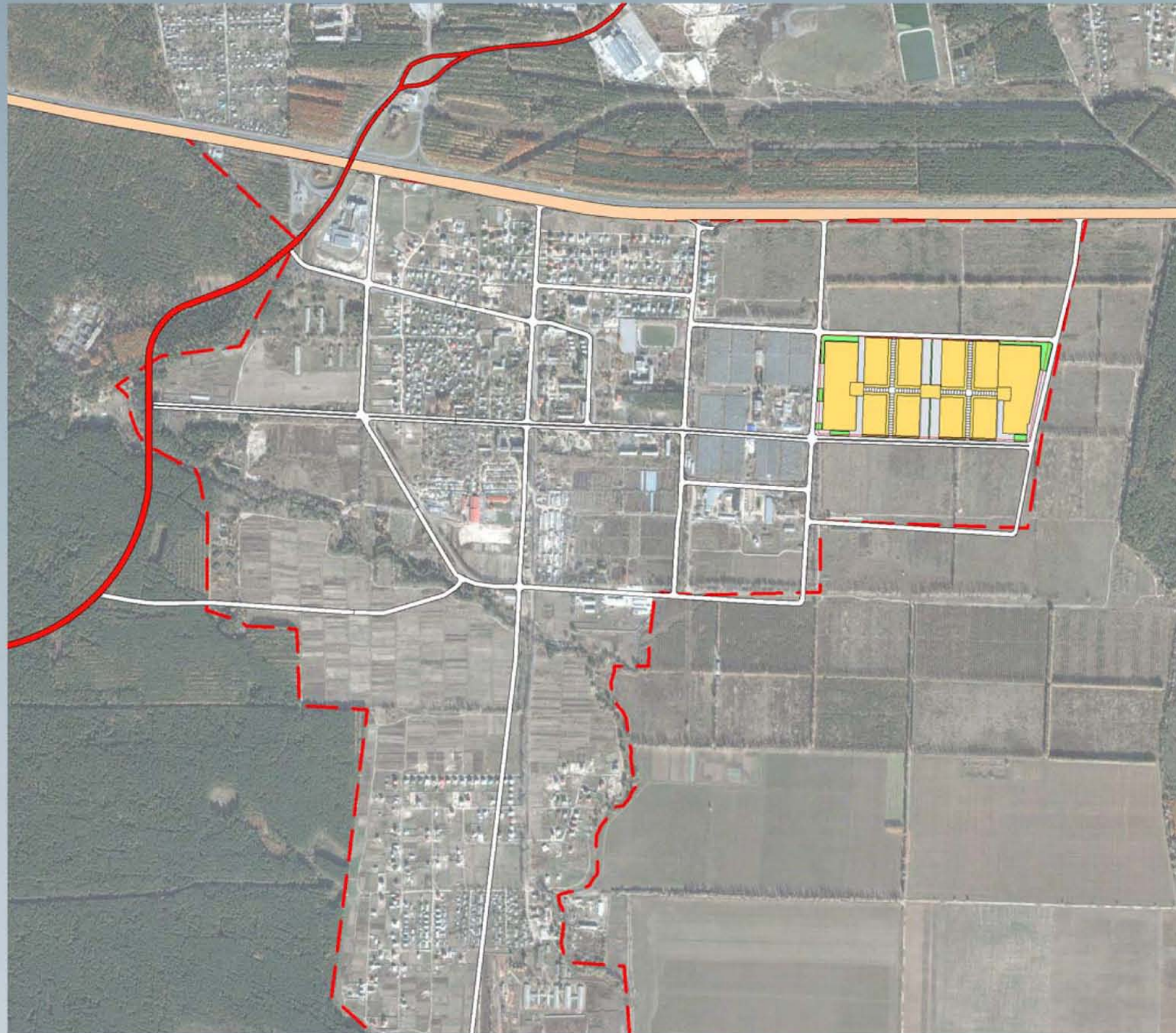




Legend:

-  - Exhibition complex
-  - subway station
-  - Boryspil Airport
-  - Kiev's downtown

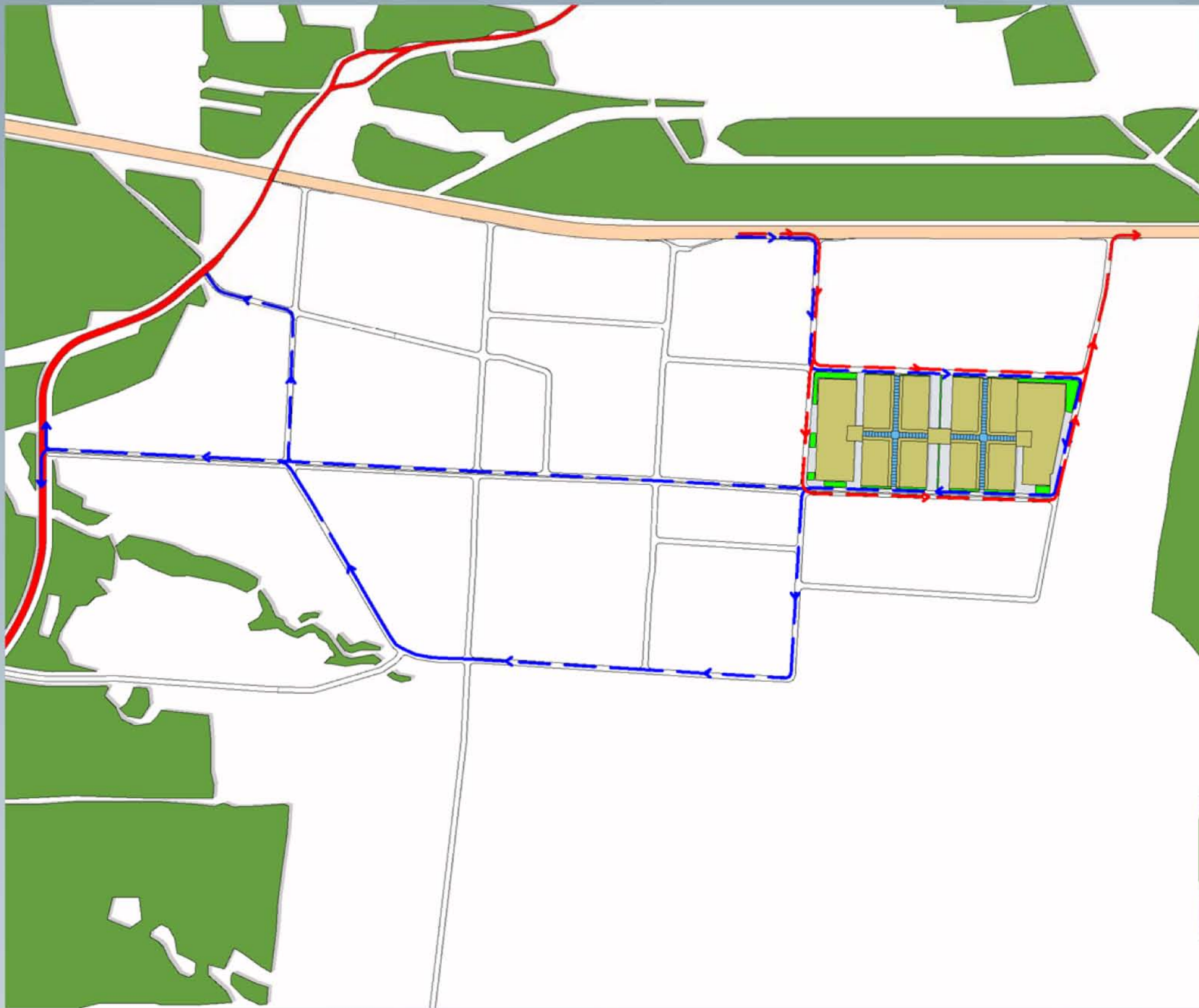




Legend:

- village borders
- Boryspil highway
- projected highway





Legend:

- ← - - - - passenger cars path
- ← - - - - trucks path


# Master plan scheme M 1:7000



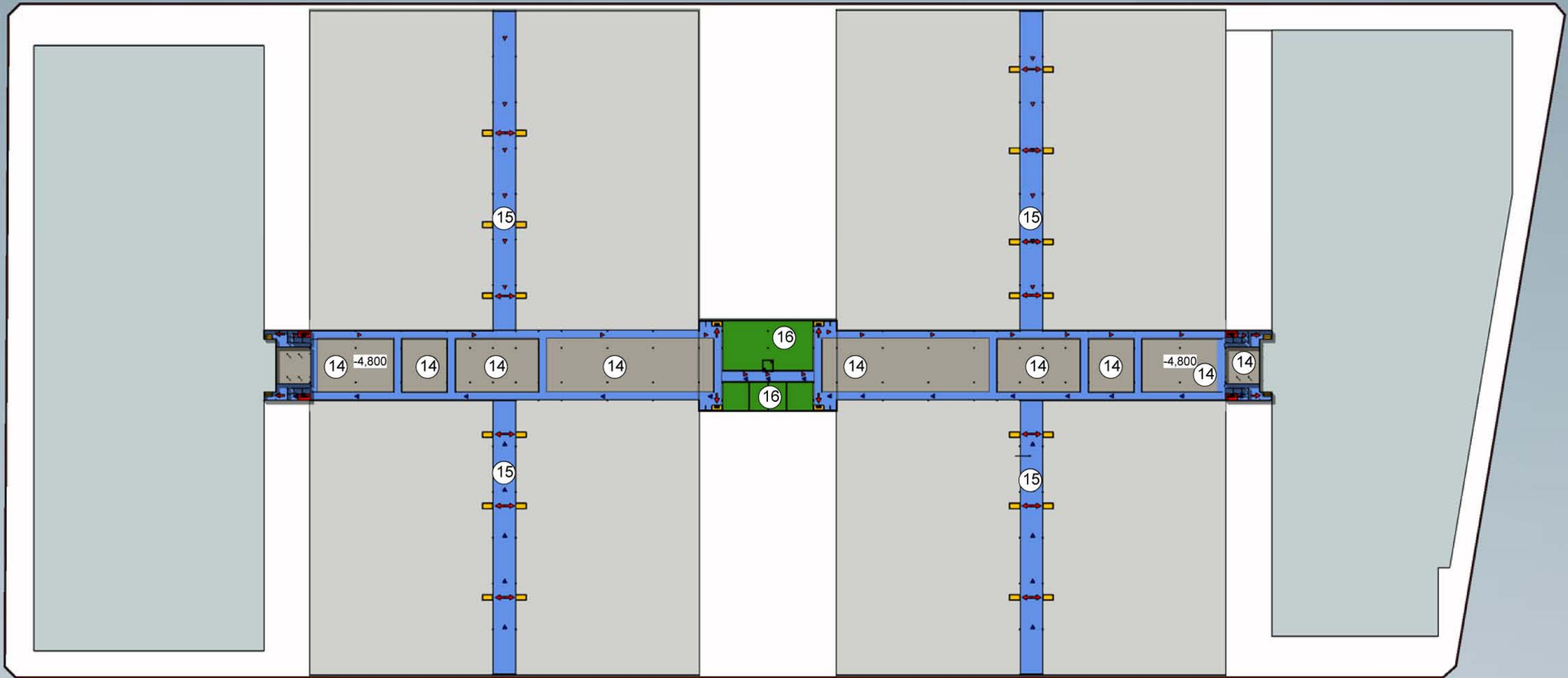
## Master plan explication:

1. Two-level parking;
2. Office and hotel centre;
3. Congress hall;
4. Multifunctional pavilion;
5. Exhibition pavilion;
6. Central gallery;
7. Exhibition equipment storage areas;
8. Packing materials storage;
9. Build in service premises.

## Legend:

-  - moving direction (conceptual) of people streams





**Legend:**

- Directions of the main streams of people
- Directions of the main reversible streams of people
- Emergency exit direction
- Emergency galleries
- Emergency exits

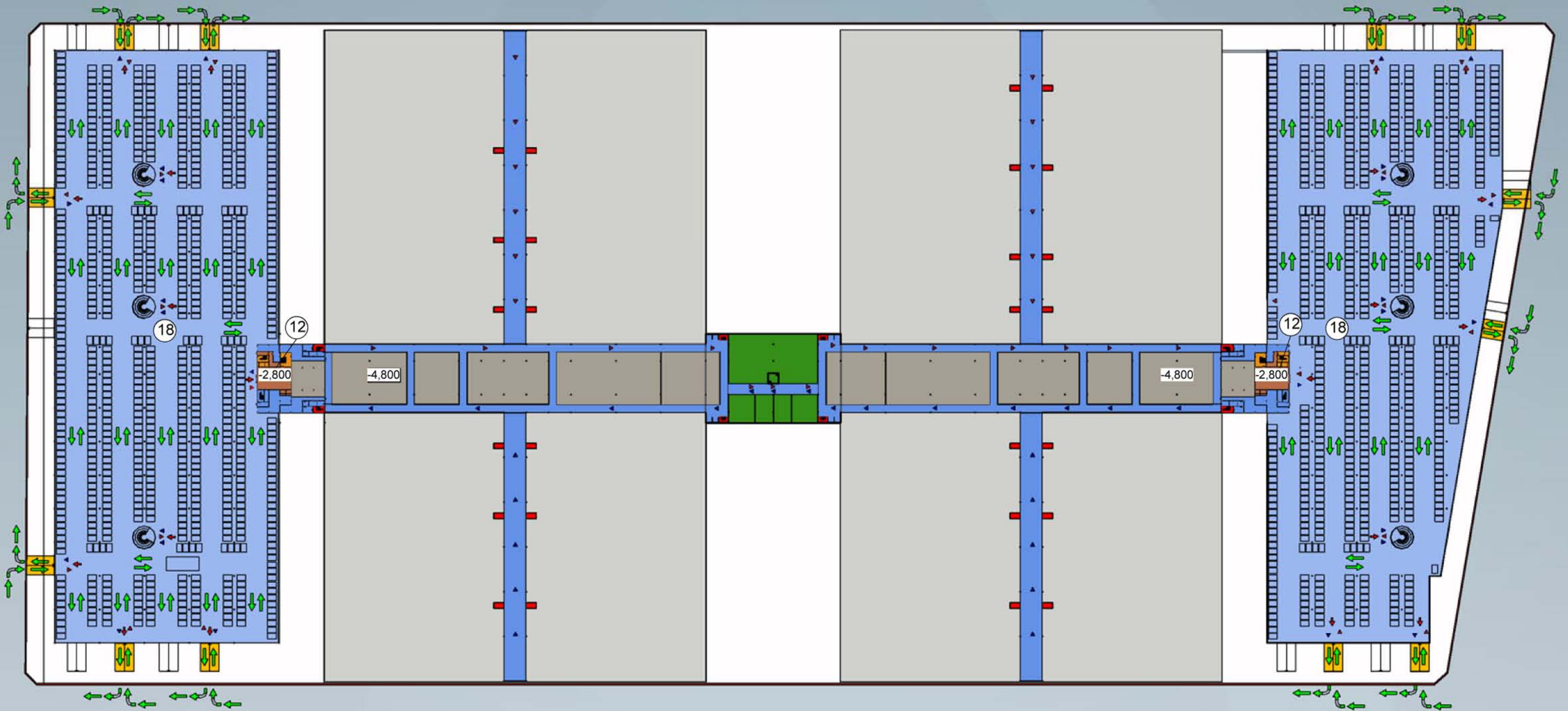
**Zoning**

- |    |    |
|----|----|
| 12 | 15 |
| 14 | 16 |

**Explication**

Number	Premise	Area	Notes
14	Utility rooms, workshops	11709 m <sup>2</sup>	
15	Communication galleries	13027 m <sup>2</sup>	
16	Restaurant kitchen and subsidiary rooms	1964 m <sup>2</sup>	





**Legend:**

- ▶ Directions of the main streams of people
- ▶ Directions of the main reversible streams of people
- Emergency exits at the level -2,800
- Emergency exits at the level -4,500
- ▶ Emergency exit direction
- ▶ Traffic direction through semi-inground parking

**Zoning**

- 12
- 14
- 15
- 16
- 18

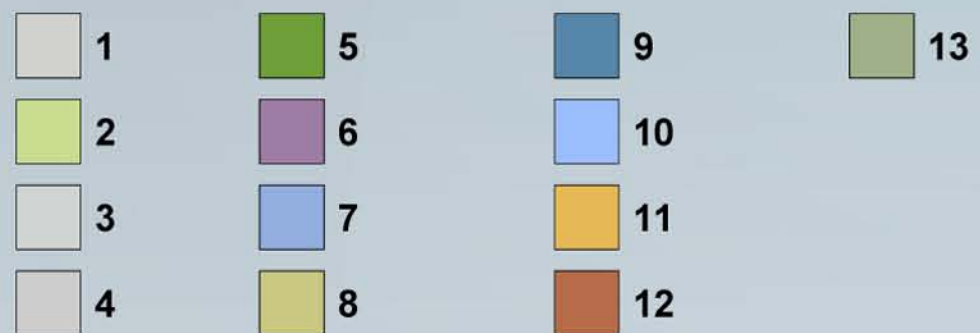
**Explication**

Number	Premise	Area	Notes
12	Office-hotel building underground level	690 m <sup>2</sup>	
18	Semi-inground parking	72174 m <sup>2</sup>	





### Zoning



### Explication

Number	Premise	Area	Notes
1	Exhibition pavilion	84813 m <sup>2</sup>	
2	Premises for general gallery services	10524 m <sup>2</sup>	
3	Reception and registration	2415 m <sup>2</sup>	
4	General use gallery	16877 m <sup>2</sup>	
5	Premises for exhibition services	5356 m <sup>2</sup>	
6	General hall and recreation area	2791 m <sup>2</sup>	
7	Restaurant for 274 places	619 m <sup>2</sup>	
8	Entrance lobby to multifunctional hall with public catering area	566 m <sup>2</sup>	
9	WC	472 m <sup>2</sup>	
10	Ground parking for 3050 places	77414 m <sup>2</sup>	
11	Warehouses	6056 m <sup>2</sup>	
12	Office-hotel building	2391 m <sup>2</sup>	
13	Multifunctional hall	14136 m <sup>2</sup>	





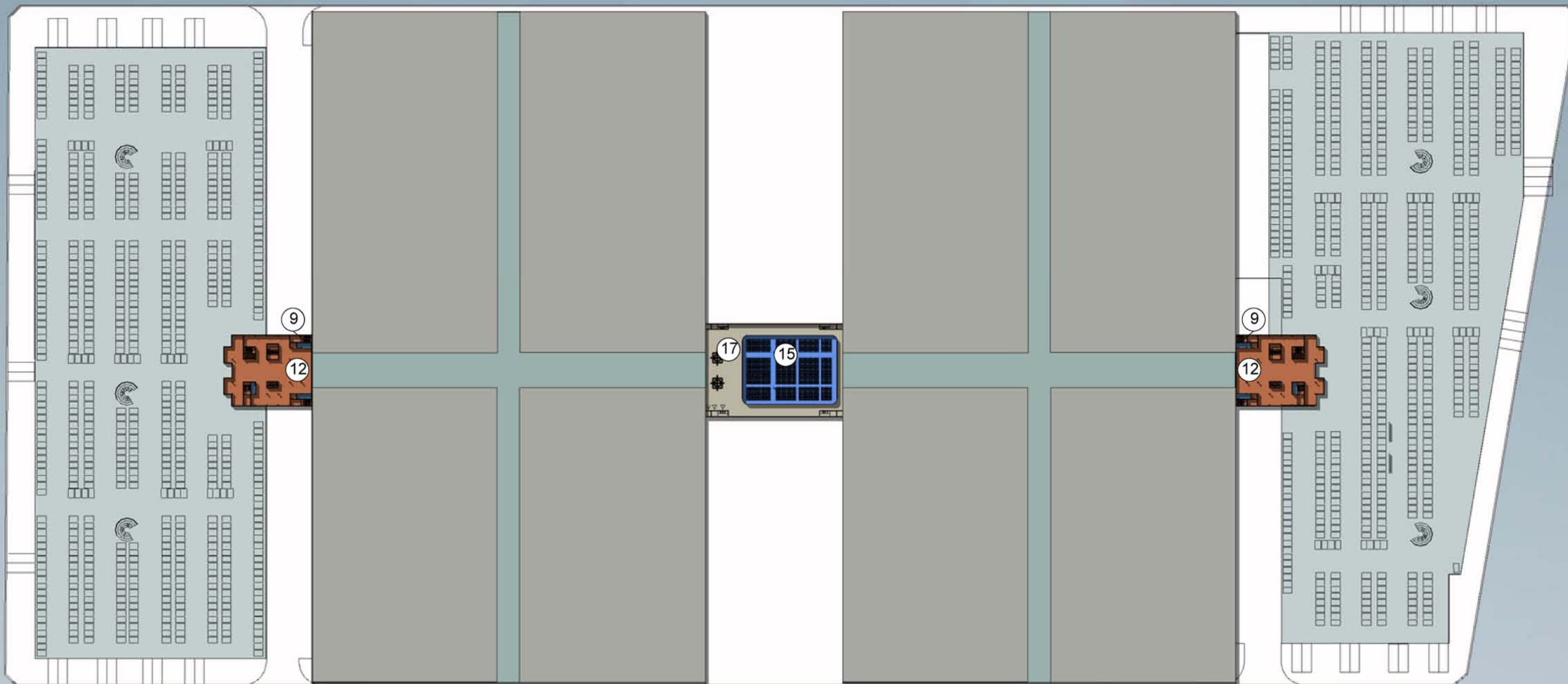
**Zoning**



**Explication**

Number	Premise	Area	Notes
5	Service and conference halls	13701 m <sup>2</sup>	
7	Restaurant for 274 places	619 m <sup>2</sup>	
9	WC	115 m <sup>2</sup>	
12	Office-hotel building	2391 m <sup>2</sup>	





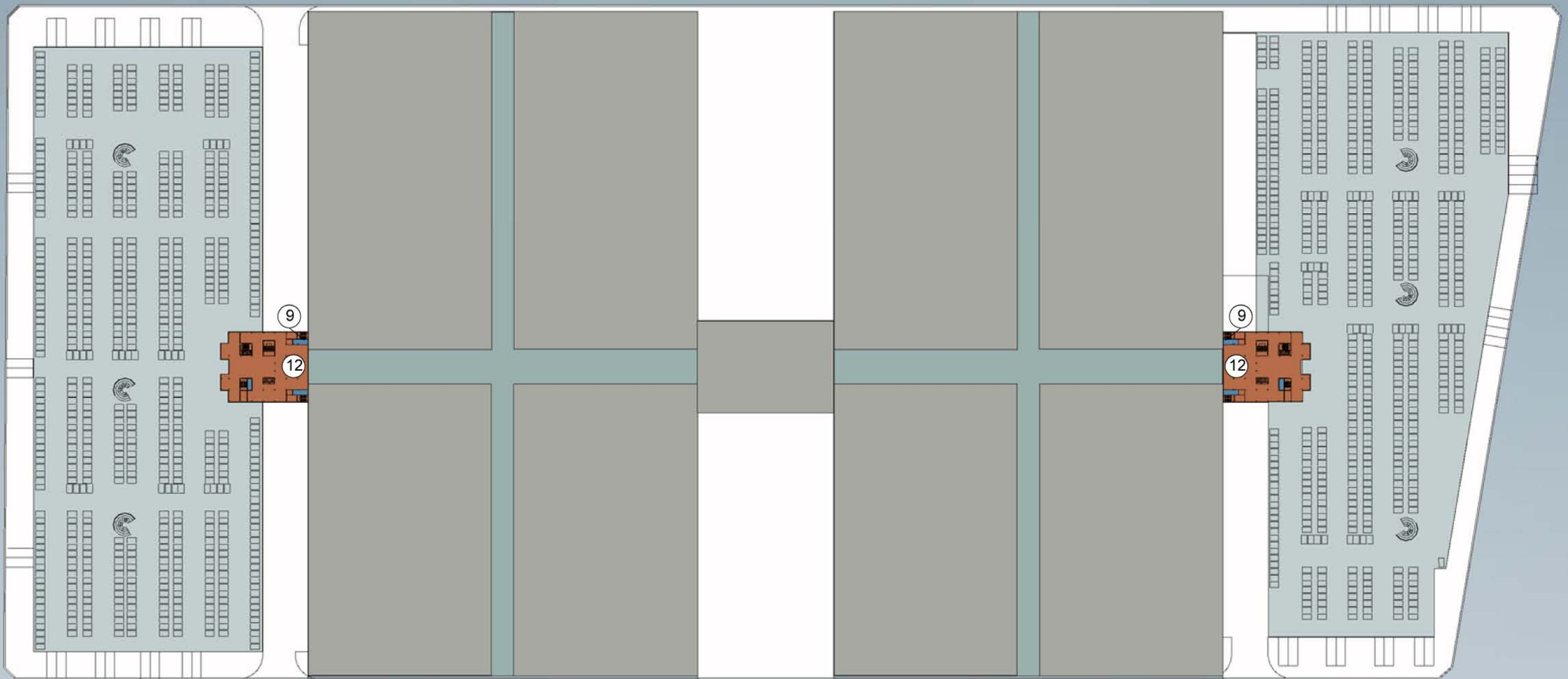
Explication

**Zoning**



Number	Premise	Area	Notes
9	WC	113 m <sup>2</sup>	
12	Office-hotel building	2959 m <sup>2</sup>	
15	Congress centre	1758 m <sup>2</sup>	
17	Congress centre hall	1662 m <sup>2</sup>	





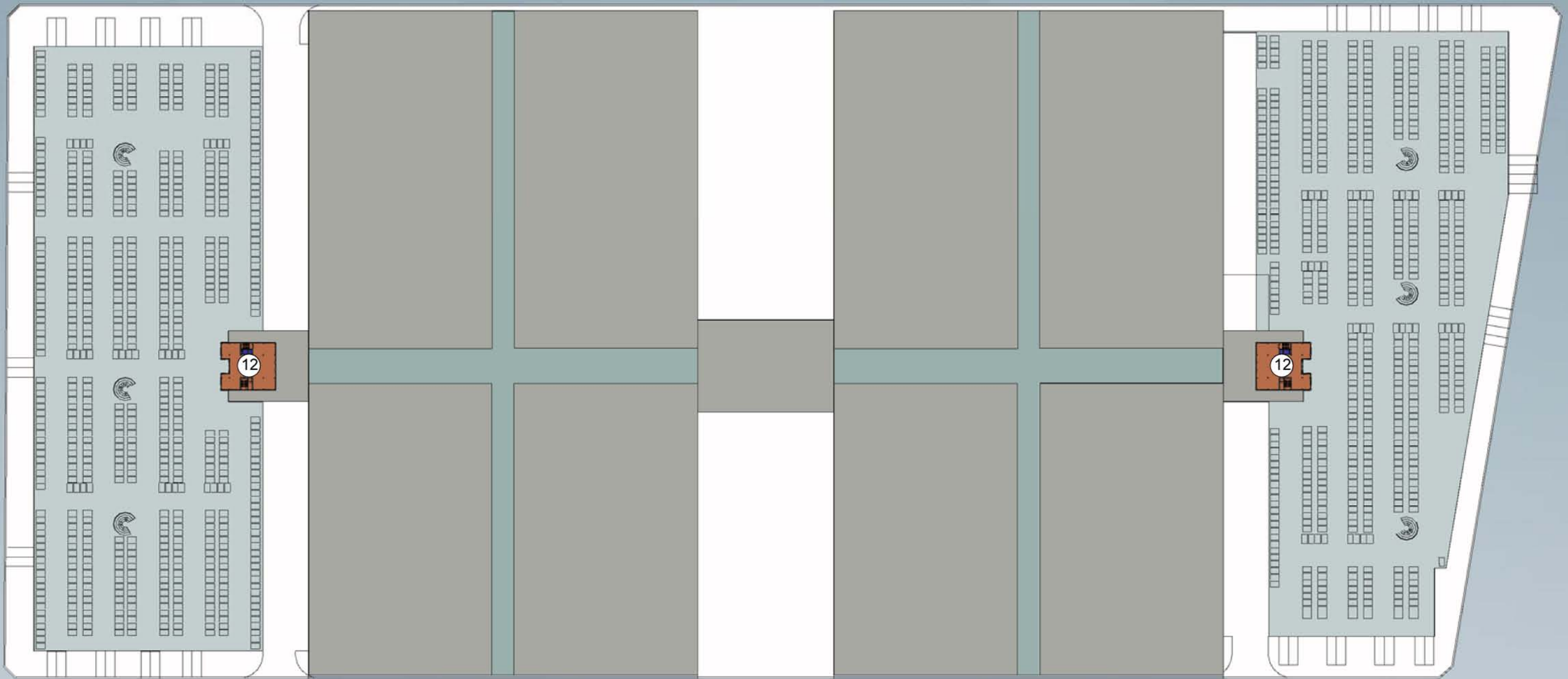
Explication

**Zoning**



Number	Premise	Area	Notes
9	WC	113 m <sup>2</sup>	
12	Office-hotel building	2957 m <sup>2</sup>	





**Zoning**

 12

**Explication**

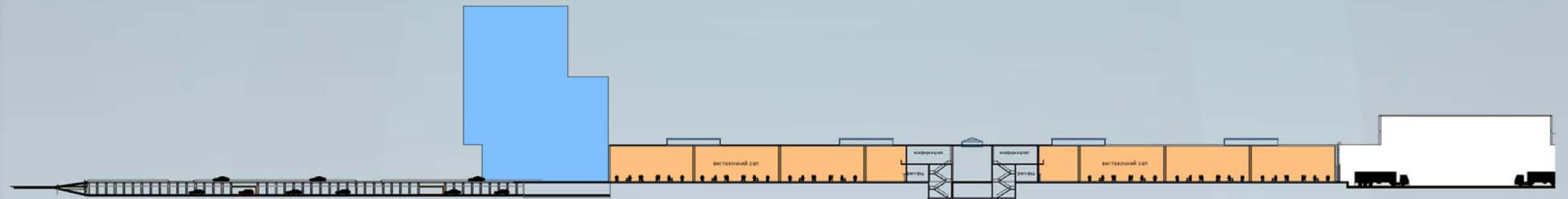
Number	Premise	Area	Notes
12	Office-hotel building	1331 m <sup>2</sup>	



# SECTION 1



# SECTION 2





## EAST ELEVATION



## NORTH ELEVATION













